

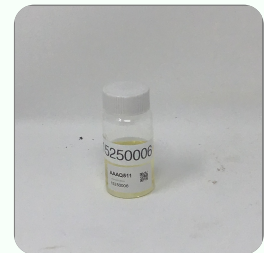
Order #: ROO201006-020006 Order Date: 2020-10-06 Collection Date: 2020-10-08 Report Date: 2020-10-16

Batch #: 15250006
Sample #: AAAQ511
Specimen Type: CBD/HEMP Edibles (Ingestion)
Extracted From: Hemp Biomass
Description: Bulk Formulated Mixture

Initial Gross Weight: 28.416 g
Specimen Weight: 246.67 mg
Method: SOP-3



Potency Tested	Heavy Metals Passed	Mycotoxins Passed
Pesticides Passed	Residual Solvents Passed	Listeria Monocytogenes Passed
Pathogenic Passed		



The photos on this report are of a sample collected by the lab and may vary from the final packaging.

Total CBD 9.767%	Total THC 0.207%	Total CBG 0.069%
Total CBN Not Detected	Other Cannabinoids 0.083%	Total Cannabinoids 10.126%

Potency - 11 (Tested)

(HPLC/LCMS)

Analyte	Result (mg/g)	(%)	LOQ (%)	Analyte	Result (mg/g)	(%)	LOQ (%)	Analyte	Result (mg/g)	(%)	LOQ (%)
CBC	<LOQ		0.001	CBD	97.670	9.767	0.001	CBDA	<LOQ		0.001
CBDV	0.461	0.046	0.001	CBG	0.692	0.069	0.001	CBGA	<LOQ		0.001
CBN	<LOQ		0.001	Delta-8 THC	<LOQ		0.001	Delta-9 THC	2.067	0.207	0.001
THCA-A	<LOQ		0.001	THCV	0.371	0.037	0.001	Total CBD	97.670	9.767	0.001
Total THC	2.067	0.207	0.001								

*Total CBD = CBD + (CBD-A * 0.877), *Total THC = THCA-A * 0.877 + Delta 9 THC, *CBG Total = (CBGA * 0.877) + CBG, *CBN Total = (CBNA * 0.877) + CBN, *Other Cannabinoids Total = CBC + CBDV + THCV + THCV-A, *Total Detected Cannabinoids = CBD Total + CBG Total + CBN Total + THC Total + CBC + CBDV + THCV + THCV-A (mg/g) = Milligram per Gram, , LOQ = Limit of Quantitation, , LOD = Limit of Detection , *Measurement of Uncertainty = +/- 5%

Xueli Gao
Ph.D., DABT Lab Toxicologist

Aixia Sun
D.H.Sc., M.Sc., B.Sc., MT (AAB) Lab Director/Principal Scientist

This report shall not be reproduced, without written approval, from ACS Laboratory. The results of this report relate only to the material or product analyzed. Test results are confidential unless explicitly waived otherwise. Accredited by a third-party accrediting body as a competent testing laboratory pursuant to ISO/IEC 17025 of the International Organization for Standardization.

721 Cortaro Drive
Sun City Center, FL - 33573

P: +1 (866) 762-8379
F: +1 (813) 634-4538

E: info@acslabcannabis.com
http://www.acslabcannabis.com

License No. 800025015
CLIA No. 10D1094068

Order #: ROO201006-020006 Order Date: 2020-10-06 Collection Date: 2020-10-08 Report Date: 2020-10-16

Batch #: 15250006
Sample #: AAAQ511
Specimen Type: CBD/HEMP Edibles (Ingestion)
Extracted From: Hemp Biomass
Description: Bulk Formulated Mixture

Initial Gross Weight: 28.416 g
Specimen Weight: 246.67 mg
Method: SOP-3



Heavy Metals (Passed)

(ICP-MS)

Analyte	Action Level (ppb)	Result (ppb)	LOQ (ppb)	Analyte	Action Level (ppb)	Result (ppb)	LOQ (ppb)	Analyte	Action Level (ppb)	Result (ppb)	LOQ (ppb)
Arsenic (As)	1500	<LOQ	100	Cadmium (Cd)	500	<LOQ	100	Lead (Pb)	500	<LOQ	100
Mercury (Hg)	3000	<LOQ	100								

(ppb) = Parts per Billion, (ppb) = (µg/kg), , LOQ = Limit of Quantitation

Mycotoxins (Passed)

(LCMS/API/GCMS)

Analyte	Action Level (ppb)	Result (ppb)	LOQ (ppb)	Analyte	Action Level (ppb)	Result (ppb)	LOQ (ppb)	Analyte	Action Level (ppb)	Result (ppb)	LOQ (ppb)
Aflatoxin B1	20	<LOQ	6	Aflatoxin B2	20	<LOQ	6	Aflatoxin G1	20	<LOQ	6
Aflatoxin G2	20	<LOQ	6	Ochratoxin A	20	<LOQ	12				

(ppb) = Parts per Billion, (ppb) = (µg/kg), , LOQ = Limit of Quantitation

Xueli Gao
Ph.D., DABT

Lab Toxicologist

Aixia Sun
D.H.Sc., M.Sc., B.Sc., MT (AAB)

Lab Director/Principal Scientist

This report shall not be reproduced, without written approval, from ACS Laboratory. The results of this report relate only to the material or product analyzed. Test results are confidential unless explicitly waived otherwise. Accredited by a third-party accrediting body as a competent testing laboratory pursuant to ISO/IEC 17025 of the International Organization for Standardization.

721 Cortaro Drive
Sun City Center, FL - 33573

P: +1 (866) 762-8379
F: +1 (813) 634-4538

E: info@acslabcannabis.com
<http://www.acslabcannabis.com>

License No. 800025015
CLIA No. 10D1094068

Order #: ROO201006-020006 Order Date: 2020-10-06 Collection Date: 2020-10-08 Report Date: 2020-10-16

Batch #: 15250006
Sample #: AAAQ511
Specimen Type: CBD/HEMP Edibles (Ingestion)
Extracted From: Hemp Biomass
Description: Bulk Formulated Mixture

Initial Gross Weight: 28.416 g
Specimen Weight: 246.67 mg
Method: SOP-3



Pesticides FL V4 (Non-Inhalable) (Passed)

(LCMS/API/GCMS)

Analyte	Action Level (ppb)	Result (ppb)	LOQ (ppb)	Analyte	Action Level (ppb)	Result (ppb)	LOQ (ppb)	Analyte	Action Level (ppb)	Result (ppb)	LOQ (ppb)
Abamectin	300	<LOQ	28.23	Acephate	3000	<LOQ	30	Acequinocyl	2000	<LOQ	48
Acetamiprid	3000	<LOQ	30	Aldicarb	100	<LOQ	30	Azoxystrobin	3000	<LOQ	10
Bifentazate	3000	<LOQ	30	Bifenthrin	500	<LOQ	30	Boscalid	3000	<LOQ	10
Captan	3000	<LOQ	30	Carbaryl	500	<LOQ	10	Carbofuran	100	<LOQ	10
Chlorantraniliprole	3000	<LOQ	10	Chlordane	100	<LOQ	10	Chlorfenapyr	100	<LOQ	30
Chloromequat Chloride	3000	<LOQ	10	Chlorpyrifos	100	<LOQ	30	Clofentezine	500	<LOQ	30
Cypermethrin	1000	<LOQ	30	Coumaphos	100	<LOQ	48	Cyfluthrin	1000	<LOQ	30
Dichlorvos	100	<LOQ	30	Daminozide	100	<LOQ	30	Diazinon	200	<LOQ	30
Ethoprophos	100	<LOQ	30	Dimethoate	100	<LOQ	30	Dimethomorph	3000	<LOQ	48
Fenhexamid	3000	<LOQ	10	Etofenprox	100	<LOQ	30	Etoxazole	1500	<LOQ	30
Fipronil	100	<LOQ	30	Fenoxycarb	100	<LOQ	30	Fenpyroximate	2000	<LOQ	30
Hexythiazox	2000	<LOQ	30	Fonicamid	2000	<LOQ	30	Fludioxonil	3000	<LOQ	48
Kresoxim Methyl	1000	<LOQ	30	Imazalil	100	<LOQ	30	Imidacloprid	3000	<LOQ	30
Methiocarb	100	<LOQ	30	Malathion	2000	<LOQ	30	Metalaxyl	3000	<LOQ	10
Mevinphos	100	<LOQ	10	Methomyl	100	<LOQ	30	methyl-Parathion	100	<LOQ	10
Oxamyl	500	<LOQ	30	Myclobutanil	3000	<LOQ	30	Naled	500	<LOQ	30
Permethrin	1000	<LOQ	30	Paclobutrazol	100	<LOQ	30	Pentachloronitrobenzene	200	<LOQ	10
Prallethrin	400	<LOQ	30	Phosmet	200	<LOQ	30	Piperonylbutoxide	3000	<LOQ	30
Pyrethrins	1000	<LOQ	30	Propiconazole	1000	<LOQ	30	Propoxur	100	<LOQ	30
Spinosad	3000	<LOQ	30	Pyridaben	3000	<LOQ	30	Spinetoram	3000	<LOQ	10
Spiroxamine	100	<LOQ	30	Spiromesifen	3000	<LOQ	30	Spirotetramat	3000	<LOQ	30
Thiamethoxam	1000	<LOQ	30	Tebuconazole	1000	<LOQ	30	Thiacloprid	100	<LOQ	30
				Trifloxystrobin	3000	<LOQ	30				

(ppb) = Parts per Billion, (ppb) = (µg/kg), , LOQ = Limit of Quantitation

Xueli Gao
Ph.D., DABT

Lab Toxicologist

Aixia Sun
D.H.Sc., M.Sc., B.Sc., MT (AAB)

Lab Director/Principal Scientist

This report shall not be reproduced, without written approval, from ACS Laboratory. The results of this report relate only to the material or product analyzed. Test results are confidential unless explicitly waived otherwise. Accredited by a third-party accrediting body as a competent testing laboratory pursuant to ISO/IEC 17025 of the International Organization for Standardization.

721 Cortaro Drive
Sun City Center, FL - 33573

P: +1 (866) 762-8379
F: +1 (813) 634-4538

E: info@acslabcannabis.com
<http://www.acslabcannabis.com>

License No. 800025015
CLIA No. 10D1094068

Order #: ROO201006-020006 Order Date: 2020-10-06 Collection Date: 2020-10-08 Report Date: 2020-10-16

Batch #: 15250006
Sample #: AAAQ511
Specimen Type: CBD/HEMP Edibles (Ingestion)
Extracted From: Hemp Biomass
Description: Bulk Formulated Mixture

Initial Gross Weight: 28.416 g
Specimen Weight: 246.67 mg
Method: SOP-3



Residual Solvents (CBD) (Passed) (GC/GCMS)

Analyte	Action Level (ppm)	Result (ppm)	LOQ (ppm)	Analyte	Action Level (ppm)	Result (ppm)	LOQ (ppm)	Analyte	Action Level (ppm)	Result (ppm)	LOQ (ppm)
1,1-Dichloroethene	8	<LOQ	0.16	1,2-dichloroethane	5	<LOQ	0.04	Acetone	5000	<LOQ	2.08
Benzene	2	<LOQ	0.02	Butanes	2000	<LOQ	2.5	Acetonitrile	410	<LOQ	1.17
Ethanol	5000	<LOQ	2.78	Ethyl Acetate	5000	<LOQ	1.11	Chloroform	60	<LOQ	0.04
Ethylene Oxide	5	<LOQ	0.1	Heptane	5000	<LOQ	1.39	Ethyl Ether	5000	<LOQ	1.39
Isopropyl alcohol	500	<LOQ	1.39	Methanol	3000	<LOQ	0.69	Hexane	290	<LOQ	1.17
Pentane	5000	<LOQ	2.08	Propane	2100	<LOQ	5.83	Methylene chloride	600	<LOQ	2.43
Total Xylenes	2170	<LOQ	2.92	Trichloroethylene	80	<LOQ	0.49	Toluene	890	<LOQ	2.92

(ppm) = Parts per Million, (µg/g), , LOQ = Limit of Quantitation

Listeria Monocytogenes (Passed) (qPCR)

Analyte	Result (cfu/g)	Result
Listeria Monocytogenes	<500	Absence in 1g

(cfu/g) = Colony Forming Unit per Gram

Xueli Gao
Ph.D., DABT

Lab Toxicologist

Aixia Sun
D.H.Sc., M.Sc., B.Sc., MT (AAB)

Lab Director/Principal Scientist

This report shall not be reproduced, without written approval, from ACS Laboratory. The results of this report relate only to the material or product analyzed. Test results are confidential unless explicitly waived otherwise. Accredited by a third-party accrediting body as a competent testing laboratory pursuant to ISO/IEC 17025 of the International Organization for Standardization.

721 Cortaro Drive
Sun City Center, FL - 33573

P: +1 (866) 762-8379
F: +1 (813) 634-4538

E: info@acslabcannabis.com
<http://www.acslabcannabis.com>

License No. 800025015
CLIA No. 10D1094068

Order #: ROO201006-020006 Order Date: 2020-10-06 Collection Date: 2020-10-08 Report Date: 2020-10-16

Batch #: 15250006
Sample #: AAAQ511
Specimen Type: CBD/HEMP Edibles (Ingestion)
Extracted From: Hemp Biomass
Description: Bulk Formulated Mixture

Initial Gross Weight: 28.416 g
Specimen Weight: 246.67 mg
Method: SOP-3



Pathogenic SE (qPCR) (Passed)

(qPCR)

Analyte	Result (cfu/g)	Analyte	Result (cfu/g)
E.Coli	Absence	Salmonella	Absence

(cfu/g) = Colony Forming Unit per Gram

Xueli Gao
Ph.D., DABT

Lab Toxicologist

Aixia Sun
D.H.Sc., M.Sc., B.Sc., MT (AAB)

Lab Director/Principal Scientist

This report shall not be reproduced, without written approval, from ACS Laboratory. The results of this report relate only to the material or product analyzed. Test results are confidential unless explicitly waived otherwise. Accredited by a third-party accrediting body as a competent testing laboratory pursuant to ISO/IEC 17025 of the International Organization for Standardization.

721 Cortaro Drive
Sun City Center, FL - 33573

P: +1 (866) 762-8379
F: +1 (813) 634-4538

E: info@acslabcannabis.com
<http://www.acslabcannabis.com>

License No. 800025015
CLIA No. 10D1094068